

# Domaine 37 (Standard)

GRAND

🏠 4 🚗 2 🚗 2

On display at  
Manor Lakes & Aintree

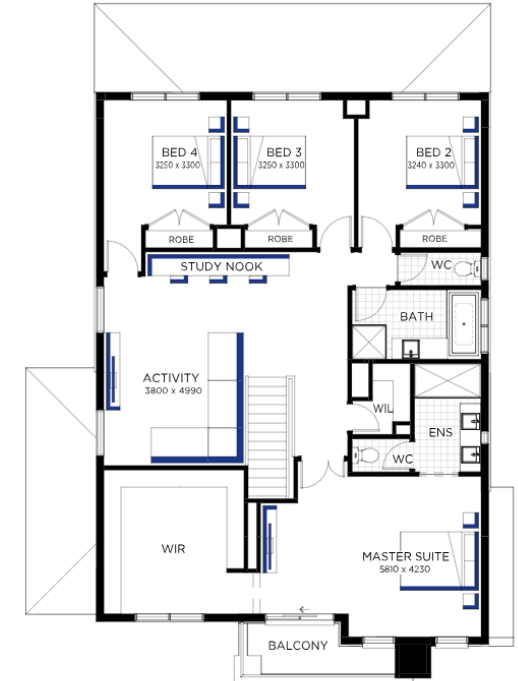
Domaine Grand 37 (25.3)

House Area	342.95 m <sup>2</sup>
House Length	17.83 m
Min. Block Width	14 m
House Area	36.92 sq
House Width	12.8 m
Min. Block Depth	25 m

Total Price  
**\$485,900**

## Customisation

[Please refer to floorplan for all options selected and the next page of the PDF.](#)



©2024 Images are for illustrative purposes only and may depict upgrade options and homes as displayed. Refer to floor plan brochures or working drawings for specific detail. Some images may also depict features not supplied by Carlisle Homes including landscaping, pools, water features, window furnishings, fireplaces, wall furnishes and finishes, cladding, in built joinery, decorative lighting, decor, furniture and flat profile roof tiles (some of these items may be available at an additional cost, visit your nearest Carlisle Homes Display Centre for full specifications). Facade details such as entry doors, window sizing and placement may vary between house types and sizes. Refer to floor plan brochures or working drawings for specific detail.

**Inspire**  
CONTEMPORARY LIVING

# Customisation



Guest Bed

Lounge & Study Flip

Additional Master Suite

Shower to Powder

Shower to Powder with Butler's Pantry

Butler's Pantry

Bed 5

Extended Alfresco

1M Garage Extension

2M Garage Extension

3M Garage Extension

3.12M Garage Extension