

the reiko release



Furniture, décor, feature lighting, landscaping & decking are not provided by Urbanedge Homes

Fixed Price House & Land

alba 1-20

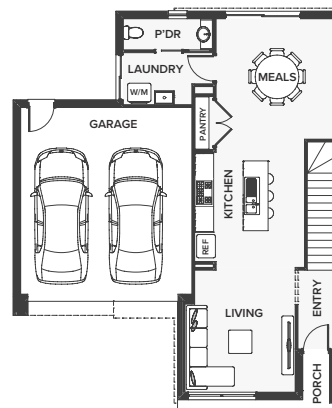
Lot 6657 Pasofino Drive
Lot size: 221m²



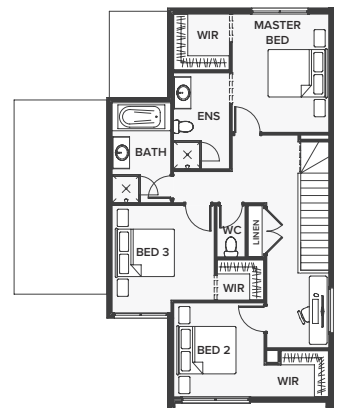
188.75m² | 19.32sq

- ✓ Architecturally designed Kitchen
- ✓ Smeg appliances
- ✓ 20mm Stone Benchtop with square edge
- ✓ Rear Landscaping[^]
- ✓ and much more...

ground floor



first floor



Contact:

Package price is based on the standard floorplan and facade shown. Please refer to house & land inclusions and house specific working drawings for all details. House and land components are covered by separate contracts. Builders preferred siting and is subject to extreme site changes beyond our reasonable control and unknown at the time of publication. A non-refundable initial \$1,500 deposit is required to secure these packages to Urbanedge Homes. To secure these lots, the developer requires a 10% deposit. Urbanedge Homes reserves the right to change prices without notification. Images are for illustrative purposes and are to be used as a guide only. Urbanedge Homes do not provide furniture, decor, feature lighting, front landscaping and decking. Subject to developer's design review panel final approval. Please refer to house specific inclusions and working drawings for all details. [^]Front landscaping is provided by the developer. For more details, please refer to your land contract. Mahercorp Pty. Ltd. ACN 100 090 560 is a Registered Building Practitioner, DBU 18864.

 **WOODLEA**

 **NEIGHBOURHOODS**
by urbanedge